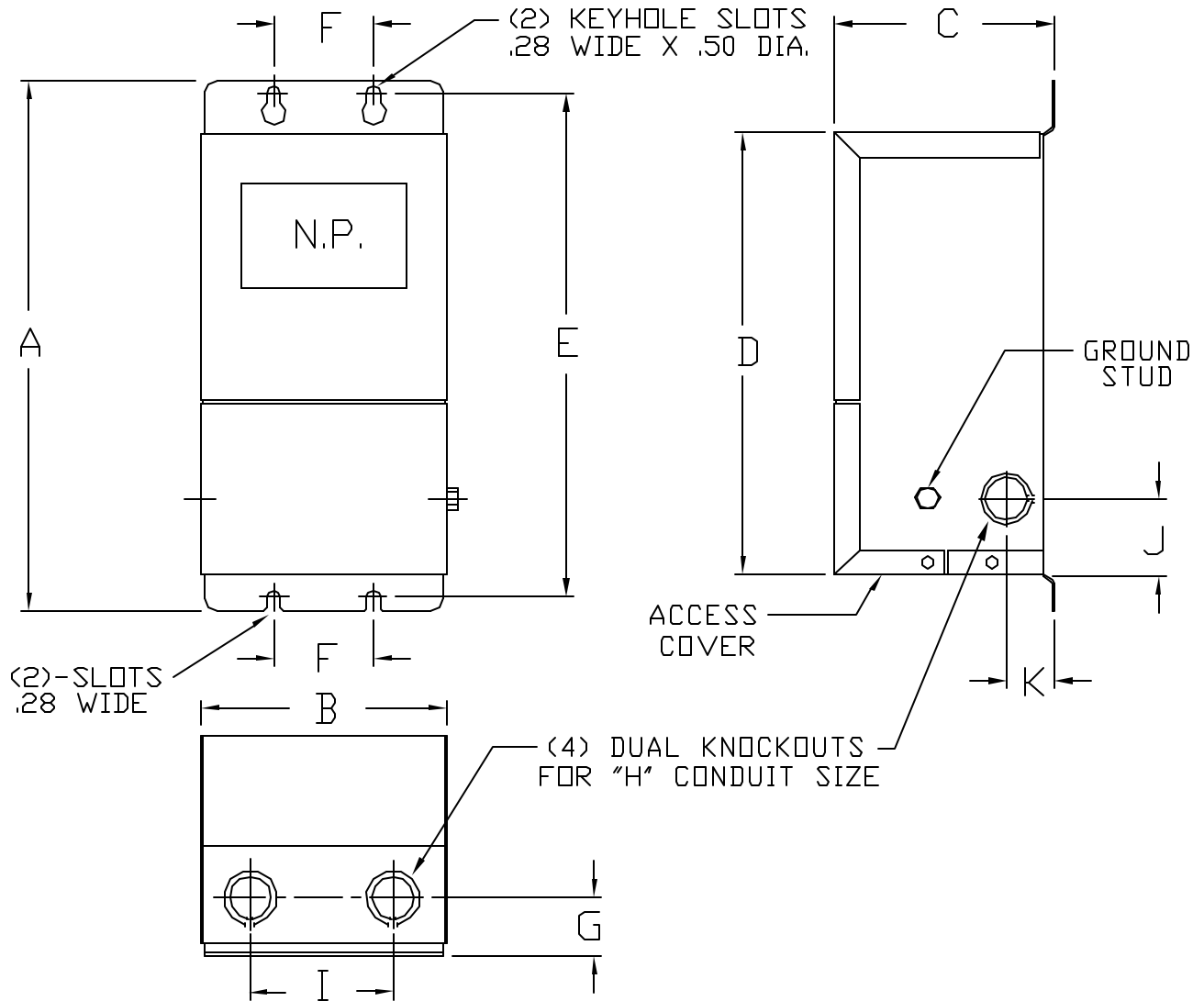


Jefferson Electric

ENCAPSULATED TRANSFORMERS



KVA	TEMP. RISE C°	NET WT. LBS.	HOUSING DIMENSIONS										
			A	B	C	D	E	F	G	H	I	J	K
1.5	135	33	12.50	6.69	5.34	10.56	12.00	2.25	1.50	1/2' & 3/4'	3.50	1.50	1.50
2.0	135	41	12.50	6.69	5.34	10.56	12.00	2.25	1.50	1/2' & 3/4'	3.50	1.50	1.50
3.0	135	68	14.56	7.56	7.15	12.68	14.12	3.50	1.88	3/4' & 1'	4.00	1.75	1.88
5.0	135	93	14.56	7.56	7.15	12.68	14.12	3.50	1.88	3/4' & 1'	4.00	1.75	1.88

NOTES:

- ALL UNITS ARE UL LISTED AND DESIGNED IN ACCORDANCE WITH ANSI, NEMA, AND CSA STANDARDS.
- THESE TRANSFORMERS UTILIZE A UL RECOGNIZED 180°C INSULATION SYSTEM, TEMPERATURE RISE AS INDICATED IN THE TABLE.
- TRANSFORMERS ARE ENCAPSULATED WITH ELECTRICAL GRADE RESIN IN A NEMA 3R-RATED ENCLOSURE. BUILT IN ACCORDANCE WITH NEMA, ANSI, UL, AND CSA STANDARDS.
- PAINT COLOR IS ANSI #61 GRAY.



GENERAL PURPOSE TRANSFORMERS
SINGLE-PHASE, 600 VOLTS CLASS, 60 HZ.
ENCAPSULATED - COPPER WOUND

PCD 411-FIGURE-3

REV.
A