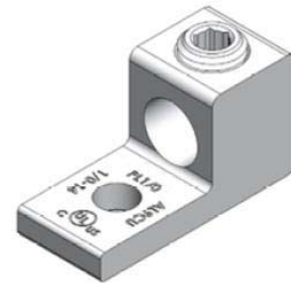


Jefferson Electric Transformers Include Terminal Lugs!

Beginning April 2011, all standard, ventilated transformers, Single-Phase 50kVA and smaller and Three-Phase 75kVA and smaller, will include terminal lugs.

Lug Kit Features :

- Mechanical style
- Bolted to terminals at factory
- Support aluminum and copper wires
- Electro-tin plated providing low contact resistance and inhibit corrosion
- Rated to 600 volts
- Chamfered wire entry providing easy installation of wires
- UL listed to 90°C
- Includes appropriate attachment hardware



Lug Type	Smallest Wire	Largest Wire	Tool Required
#14 - 2	#14	#2	slotted screwdriver
#2/0 - 6	#6	Two-#0	3/16" Hex wrench
250MCM - 6	#6	250MCM	5/16" Hex wrench
350MCM - 6	#6	350MCM	5/16" Hex wrench
600MCM - 2	#2	600MCM	3/8" Hex wrench

#0-14 = AWG, American Wiring Gauge
MCM = Thousands of Circular Mils
Mil = 1/1000th of an Inch

Installation Recommendations

- Each lug allows wire size ranges for the kVA and voltage of the transformer
- Wires should be cleaned and coated with a suitable joint compound before installing them into lugs
- Wires should be tightened to recommended torque defined in installation manual
- Detailed installation instructions provided with each Lug Kit and in the transformer installation manual

Lug Kits Ordered Separately

<i>Catalog Number</i>	<i>Description*</i>	<i>Used on**</i>
4PT-2000-LUG	Lug Kit #14-2(3) & #14-2(4)	423-7162-000
4PT-2001-LUG	Lug Kit #14-2(3) & 2/0-6(4)	423-7194-000
4PT-2002-LUG	Lug Kit #14-2(3) & 250MCM(4)	423-7214-000
4PT-2003-LUG	Lug Kit 2/0-14(3) & 600MCM(4)	423-7234-000
4PT-2004-LUG	Lug Kit 250MCM(3) & 250MCM(4)	423-7218-000
4PT-2007-LUG	Lug Kit #14-2(2) & 2/0-6(2)	421-7162-000
4PT-2008-LUG	Lug Kit #14-2(2) & 350MCM(2)	421-7205-000
4PT-2009-LUG	Lug Kit 2/0-14(2) & 600MCM(2)	421-7225-000
4PT-2011-LUG	Lug Kit 2/0-14(3) & 350MCM(4)	423-7237-000
4PT-2012-LUG	Lug Kit 2/0-14 (3) & #14-2(4)	423-7191-000
4PT-2013-LUG	Lug Kit 250MCM(3) & #14-2(4)	423-7211-000
4PT-2014-LUG	Lug Kit 600MCM(3) & 2/0-14(4)	423-7231-000
4PT-2017-LUG	Lug Kit #14-2(2) & 250MCM(2)	421-7188-000
4PT-2018-LUG	Lug Kit 2/0-14(2) & 600MCM(4)	421-7235-000
4PT-2019-LUG	Lug Kit 2/0-14 (3) & 2/0-14 (4)	423-7235-000
4PT-2022-LUG	Lug Kit 600MCM(2) & 600MCM(2)	421-7222-000
4PT-2024-LUG	Lug Kit 350MCM(3) & 600MCM(4)	423-7232-000
4PT-2025-LUG	Lug Kit 350MCM(3) & 2/0-14(4)	423-7233-000
4PT-2026-LUG	Lug Kit 600MCM(2) & 600MCM(4)	421-7232-000
4PT-2028-LUG	Lug Kit 250MCM(2) & 250MCM(2)	421-7182-000
4PT-2029-LUG	Lug Kit 350MCM(2) & 350MCM(2)	421-7202-000

* "Description" defines Primary lug (Qty) & Secondary lug (Qty)

** "Used on" shows one common catalog number. This kit can be used on a variety of other units

Other reference materials include;

- Transformer Installation, Operation and Maintenance Manual
- Lug-Kit Instruction Sheet

