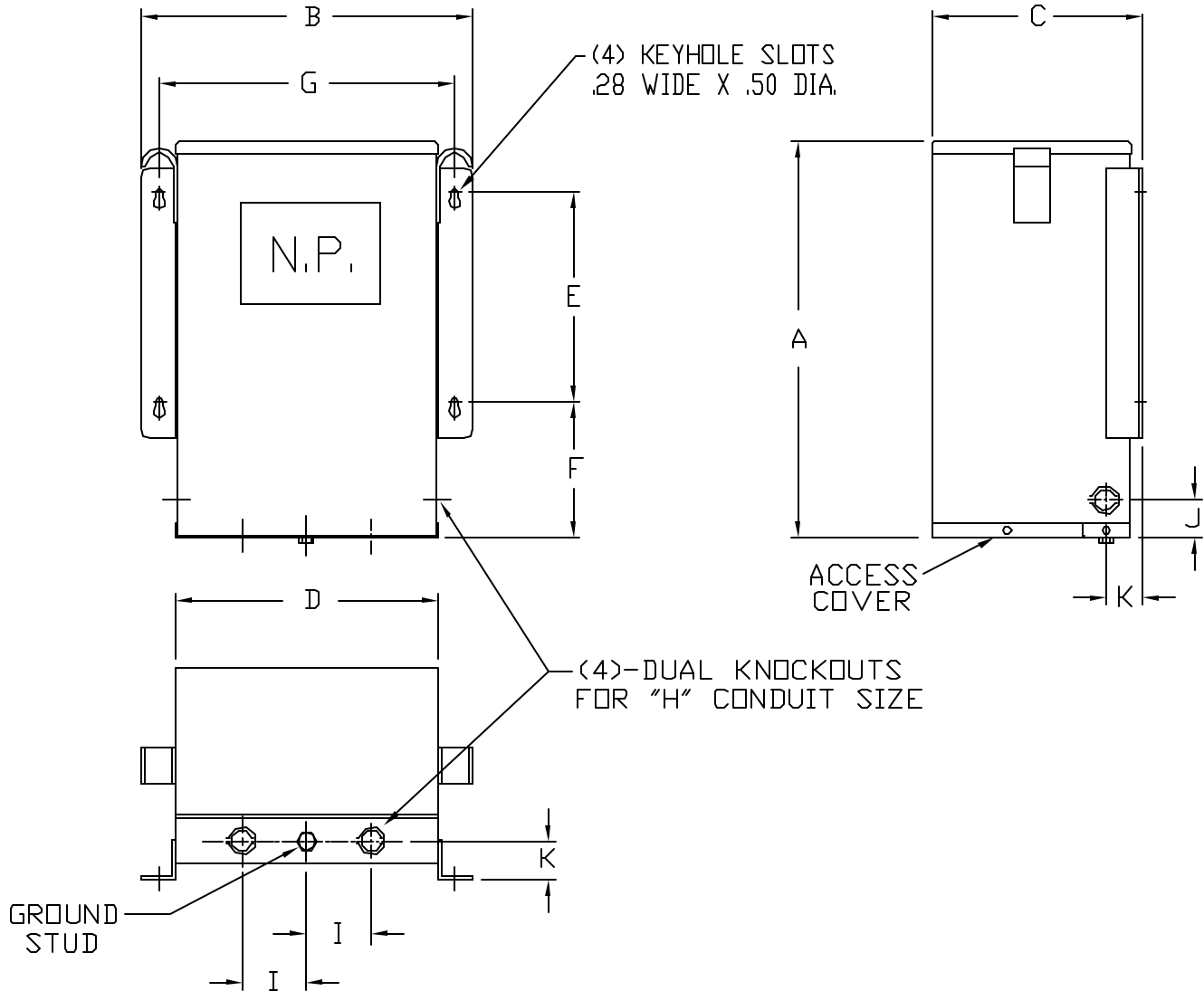


# Jefferson Electric

## ENCAPSULATED TRANSFORMERS



KVA	TEMP. RISE C°	NET WT. LBS.	HOUSING DIMENSIONS										
			A	B	C	D	E	F	G	H	I	J	K
7.5	135	130	16.12	13.50	8.55	10.62	8.25	5.50	12.00	3/4' & 1'	3.00	1.75	2.00
10	135	155	16.12	13.50	8.55	10.62	8.25	5.50	12.00	3/4' & 1'	3.00	1.75	2.00
15	135	255	21.12	16.50	10.06	13.67	12.50	6.25	15.00	1' & 1-1/2'	3.50	2.00	2.25
25	135	291	21.12	16.50	10.06	13.67	12.50	6.25	15.00	1' & 1-1/2'	3.50	2.00	2.25

**NOTES:**

1. ALL UNITS ARE UL LISTED AND DESIGNED IN ACCORDANCE WITH ANSI, NEMA, AND CSA STANDARDS.
2. THESE TRANSFORMERS UTILIZE A UL RECOGNIZED 180°C INSULATION SYSTEM, TEMPERATURE RISE AS INDICATED IN THE TABLE.
3. TRANSFORMERS ARE ENCAPSULATED WITH ELECTRICAL GRADE RESIN IN A NEMA 3R-RATED ENCLOSURE, BUILT IN ACCORDANCE WITH NEMA, ANSI, UL, AND CSA STANDARDS.
4. PAINT COLOR IS ANSI #61 GRAY.



GENERAL PURPOSE TRANSFORMERS  
SINGLE-PHASE, 600 VOLTS CLASS, 60 HZ.  
ENCAPSULATED - ALUMINUM WOUND

PCD 411-FIGURE-4

REV.  
A