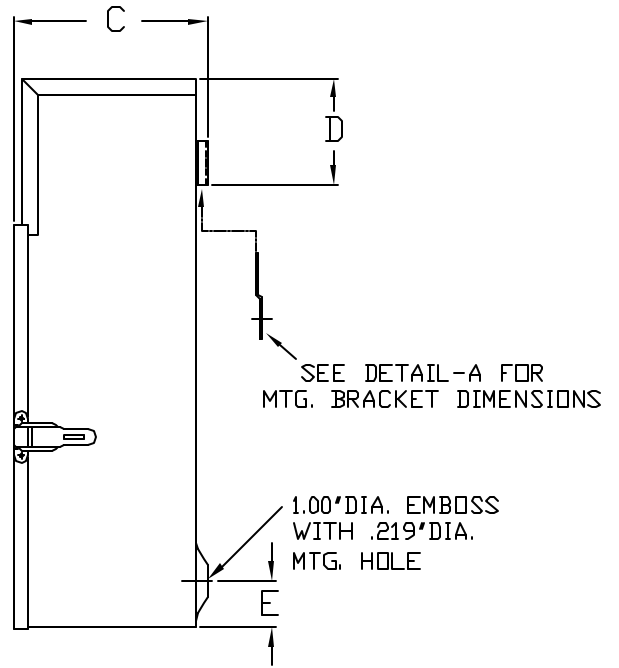
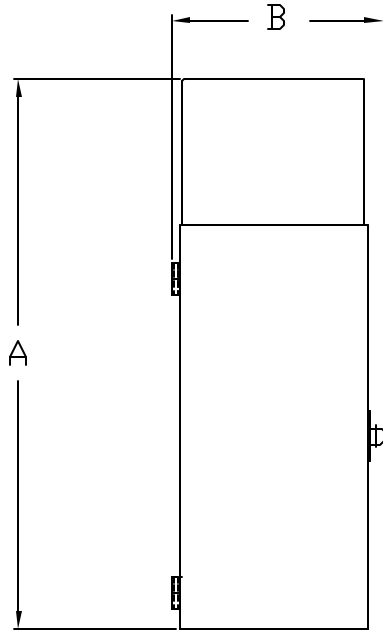
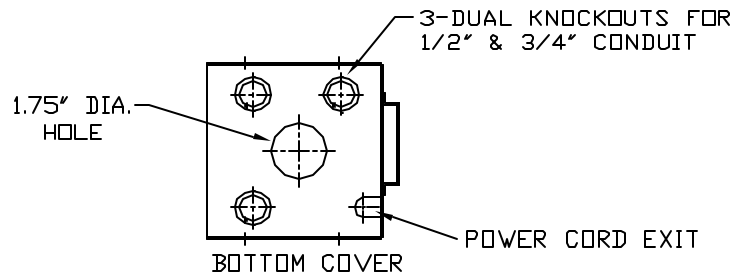
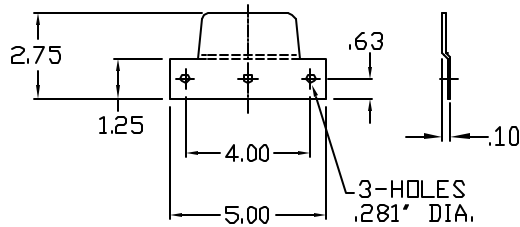


Jefferson Electric

ENCAPSULATED TRANSFORMERS



DETAIL-A
WALL MTG. BRACKET



VA	TEMP. RISE C°	NET WT. LBS.	HOUSING DIMENSIONS				
			A	B	C	D	E
300	115	27	17.60	6.80	6.19	3.38	1.50
600	115	29	17.60	6.80	6.19	3.38	1.50
900	115	34	18.60	7.80	6.19	3.38	1.50
1200	115	37	18.60	7.80	6.19	3.38	1.50
1500	115	52	19.60	9.50	7.19	4.38	1.50
1800	115	57	19.60	9.50	7.19	4.38	1.50

NOTES:

1. ALL UNITS ARE UL LISTED AND DESIGNED IN ACCORDANCE WITH ANSI, NEMA, AND CSA STANDARDS.
2. THESE TRANSFORMERS UTILIZE A UL RECOGNIZED 180°C INSULATION SYSTEM, TEMPERATURE RISE AS INDICATED IN THE TABLE.
3. TRANSFORMERS ARE ENCAPSULATED WITH ELECTRICAL GRADE RESIN IN A NEMA 3R-RATED ENCLOSURE. BUILT IN ACCORDANCE WITH NEMA, ANSI, UL, AND CSA STANDARDS.
4. PAINT COLOR IS BLACK POWDER FINISH (OR) STAINLESS STL.



GENERAL PURPOSE TRANSFORMERS
SINGLE-PHASE, 600 VOLTS CLASS, 60 HZ.
ENCAPSULATED - COPPER WOUND

PCD 417-FIGURE-20

REV.
A